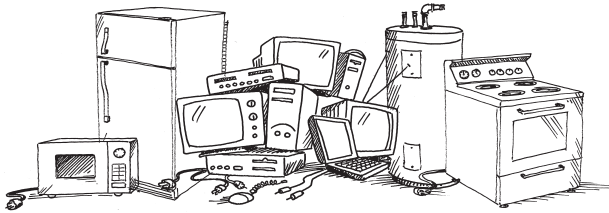


# Business Guide To the MRC

**The WLSSD Materials Recovery Center (MRC) accepts tires, electronics, appliances, recyclables, mixed waste, and recoverable materials from eligible businesses.**



## How It Works



All area businesses can bring mixed waste and recoverable materials to the MRC.



All area businesses can bring materials banned from the trash—such as tires, appliances, and electronics, to the MRC in limited quantities (see back for details).

Tires, appliances, and electronics that are generated from the primary line of a business will not be accepted. For example, electronics will be accepted from a small accounting firm but not from an electronics repair shop.









Tires, appliances, electronics, recyclables, mixed waste, and recoverable materials will be accepted for a fee.



**Western Lake Superior  
Sanitary District**  
(218) 722-3336 • [wlssd.com](http://wlssd.com)

# Business Guide

**All wastes are subject to fees.**

Waste	Limit	Accepted for a fee from
 Electronics*	5 per visit	Businesses that use electronics* to support their daily operations. For example, a bank could bring in computers; but a computer retailer could not.
 Tires	20 per visit	Businesses that use tires to support their daily operations. For example, a small contractor with a company vehicle could bring in tires; but a tire retailer could not.
 Appliances**	10 per visit	Businesses that use appliances** to support their daily operations. For example, a law office could bring in an old microwave from the lunch room; but an appliance retailer could not.
 Recyclables	3 yds per visit	Rural businesses that do not have a curbside recycling option available may drop off glass, aluminum, plastic, paper and cardboard. Scrap metal may also be recycled.
 Mixed Waste	unlimited	Mixed waste, excluding household garbage, can be deposited by all area businesses.
 Recoverable Materials	unlimited	Separate materials such as concrete, clean wood, and textiles for recovery or recycling. Reusable items can also be dropped off by all area businesses. WLSSD staff makes all determinations about the suitability of materials for reuse.

**\* Electronics include:**



Electronic equipment with a display screen or monitor 7" or larger including TVs, computer monitors, and video devices; computer systems; photocopiers; facsimile machines; video players (VCRs, DVRs, DVD players); and rechargeable and mercury battery items.

**\*\* Appliances include:**

Air conditioners, dehumidifiers, dishwashers, clothes washers and dryers, freezers, furnaces, microwave ovens, refrigerators, stoves, and water heaters.



**Questions?  
(218) 722-3336 • wlsd.com**